



RIK-Q50 System

The RIK-Q50 is the next evolution of Modula Seismic Solutions. Common modular steel frames adopt expensive and complex proprietary components which are not consumer friendly. The RIK-Q50 system offers improved strength and adaptability over these systems without having those same compromises. By accommodating a variety of common steel type and lengths, one can assemble any steel frame with ease at a lower cost.

Combine that with the simplistic and quick installation via self drilling screws, and installation speeds of complex steel structures become less daunting.



WATCH IT IN ACTION NOW!

<https://www.youtube.com/watch?v=Cw-vONW7sjk>

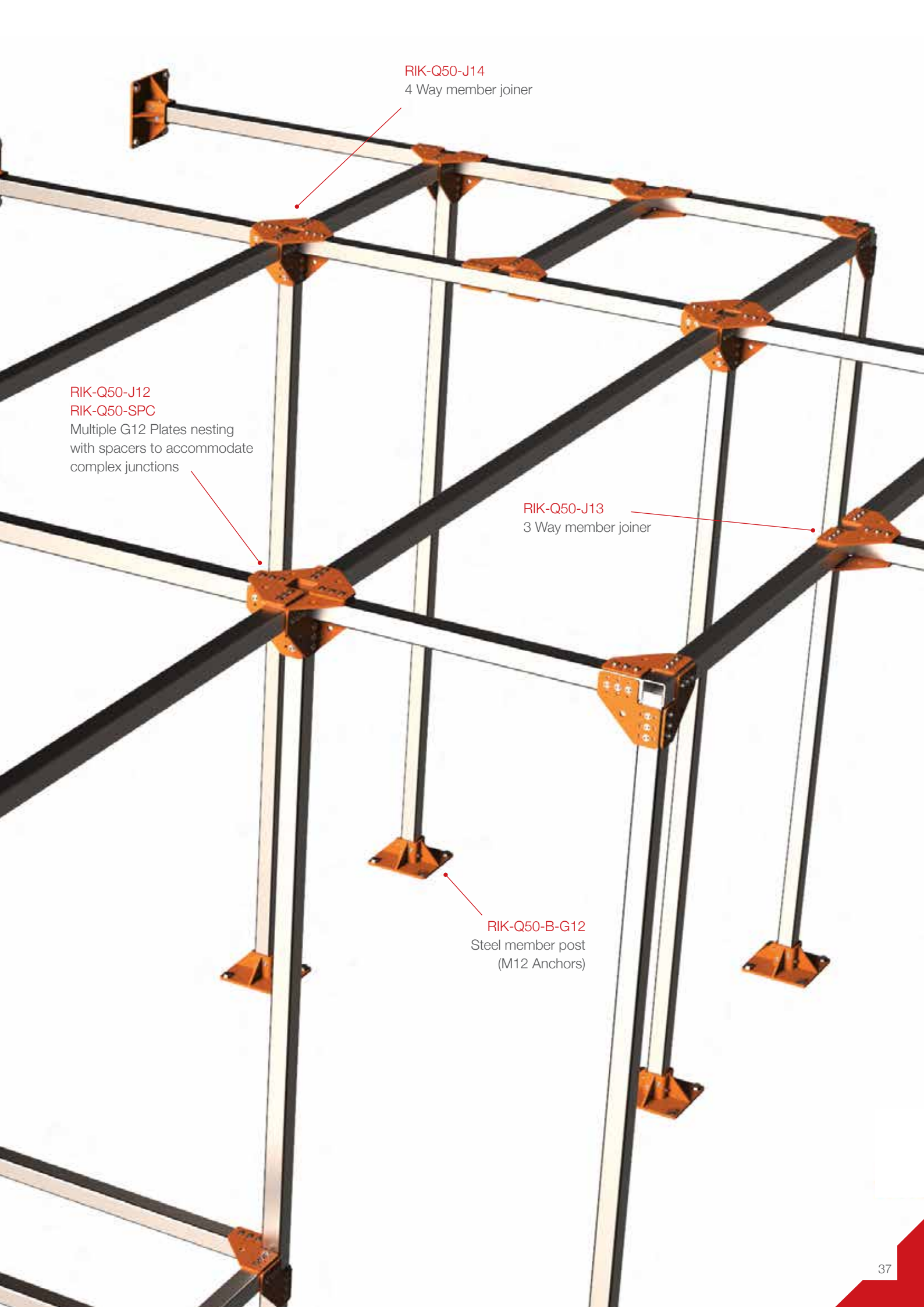
What is the RIK-Q50 System?

Developed specifically for use in seismic application, the RIK-Q50 System offers a modular solution to frame construction.

RIK-Q50-J12
2 Way member joiner

Features & Benefits

- Low cost non proprietary steel members
- Stackable joiners allow for modular design
- Quick and easy installations via Tek screws
- Seismically tested to suit your application needs
- Adaptable to a variety of different connections



RIK-Q50-J14
4 Way member joiner

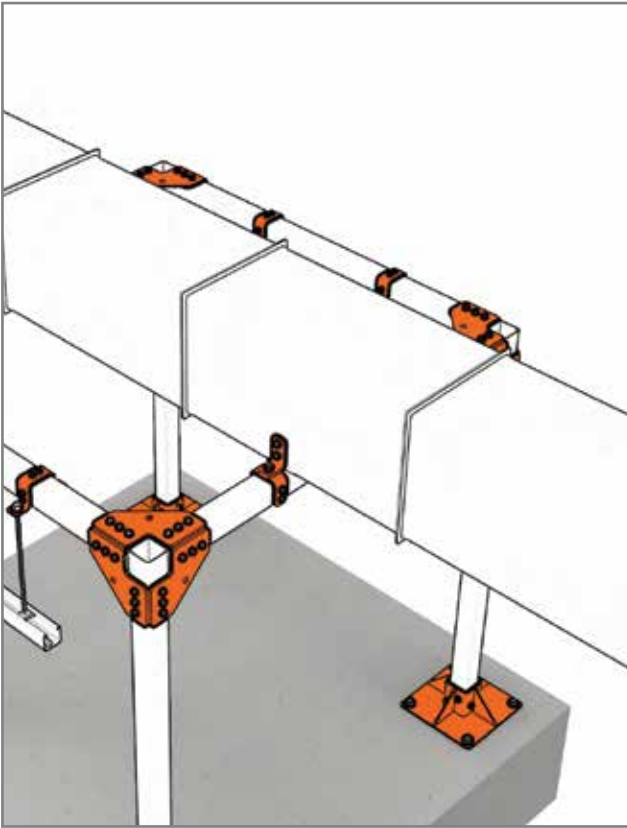
RIK-Q50-J12
RIK-Q50-SPC
Multiple G12 Plates nesting
with spacers to accommodate
complex junctions

RIK-Q50-J13
3 Way member joiner

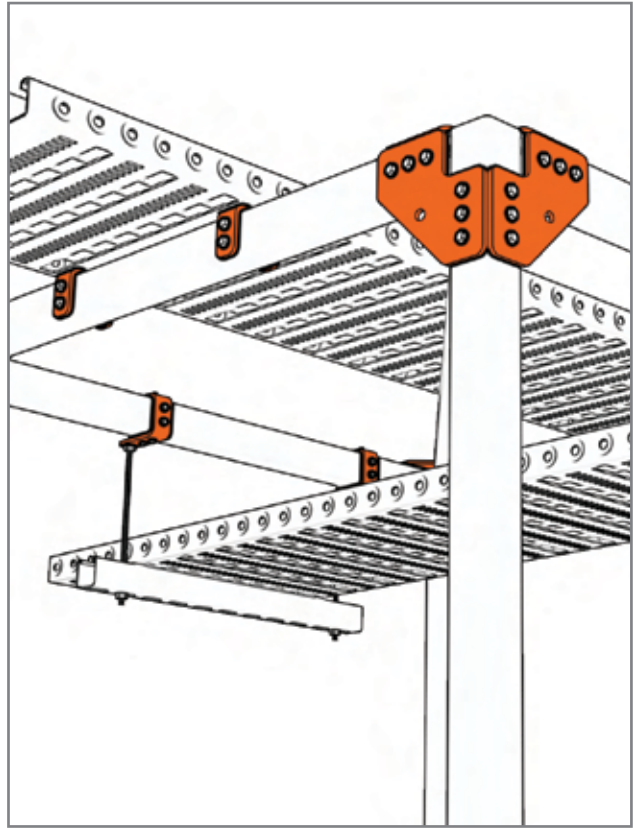
RIK-Q50-B-G12
Steel member post
(M12 Anchors)

Application Examples

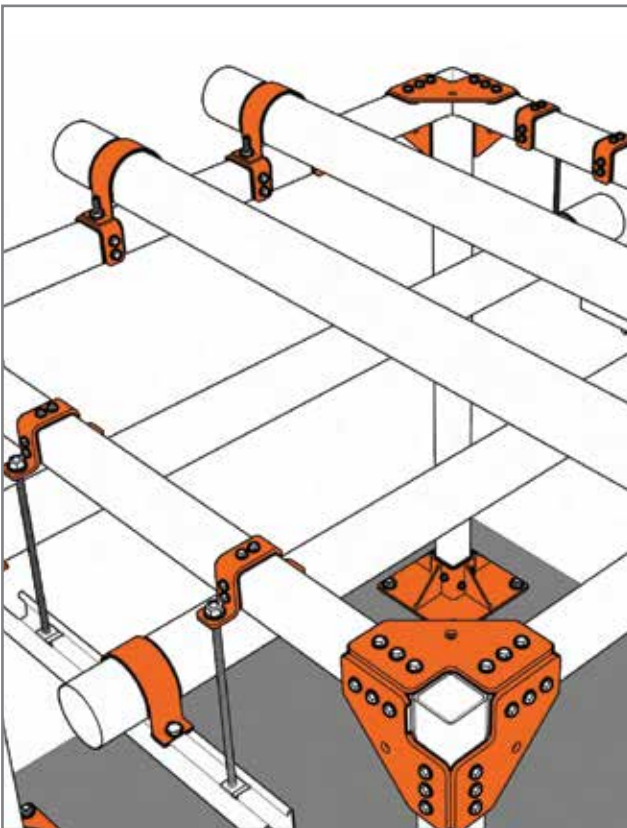
Duct Installation



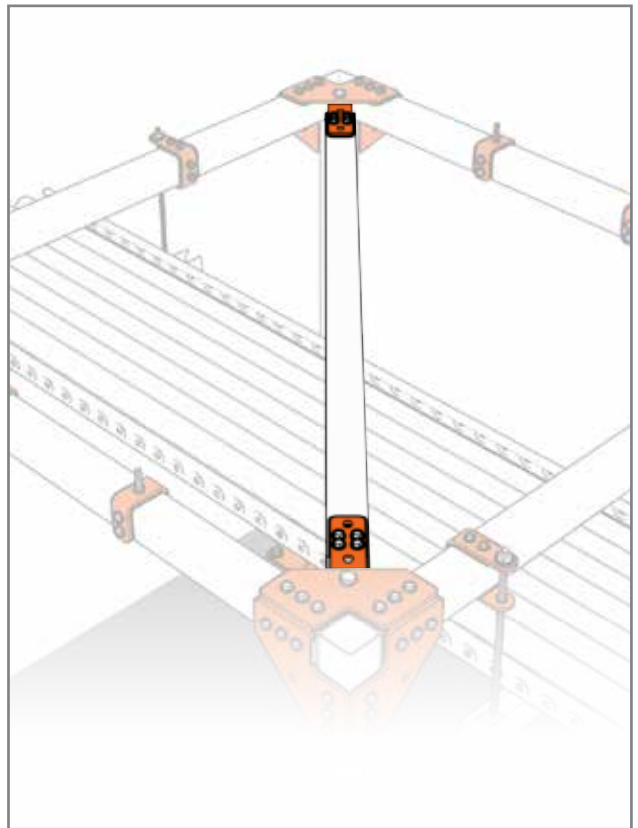
Cable Tray Installation



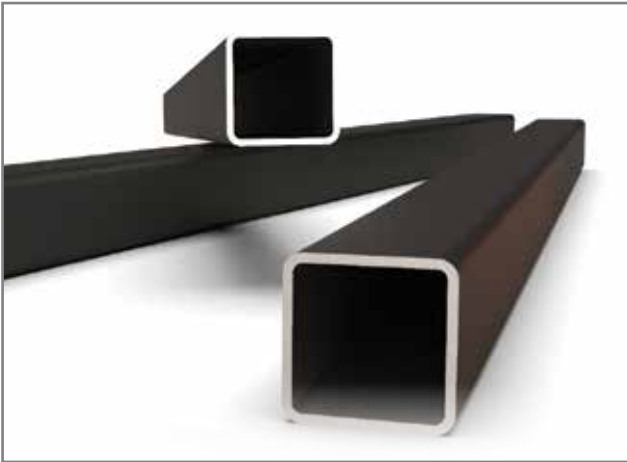
Pipe Installation



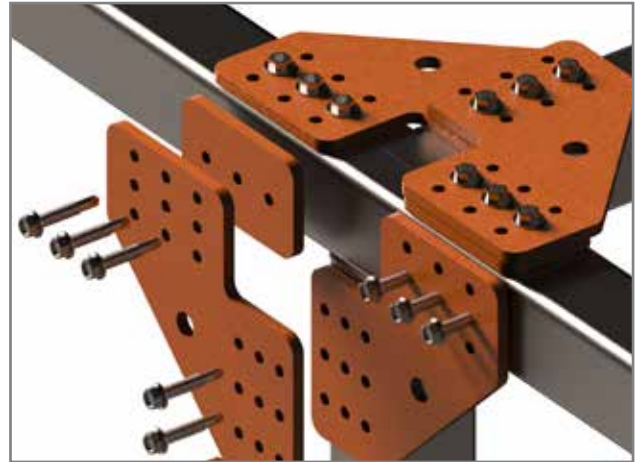
Cross Bracing



Product Features



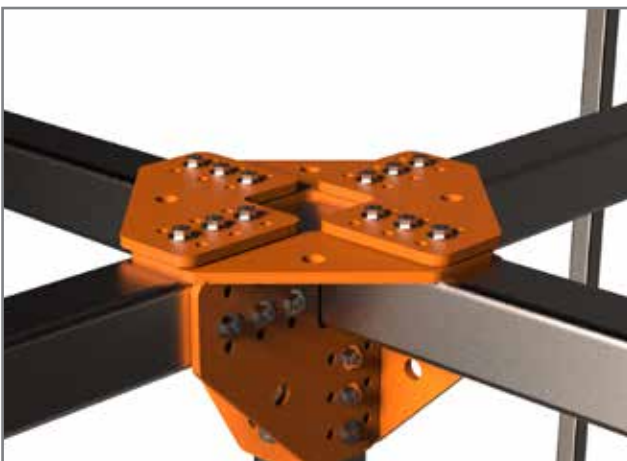
Accommodates common steel square sections eliminating the need for high cost specialised profiles.



Quick and Easy Installation: The simplicity of the plate profiles provide installers with hard edges to align with steel members, reducing the complexity of installations.



Adaptable connections via bracing hard points that allow for cross bracing along the frame with either rigid or wire solutions.



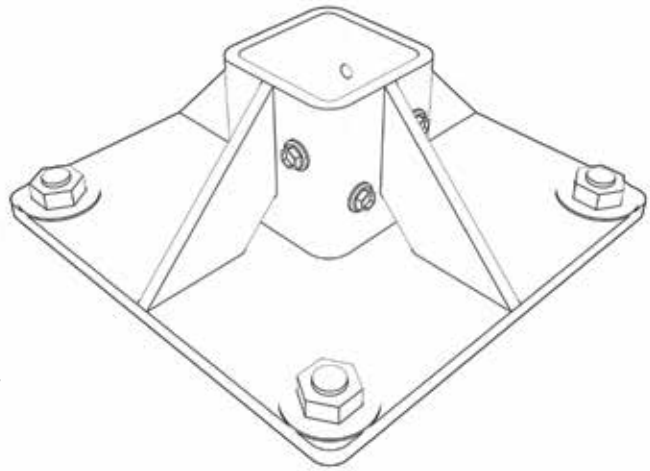
Stackable: The system comprises of a base plate, mounting plate and a plate spacer. The mounting plate can be nested into a different configuration to accommodate a variety of directions. Due to its profile, it can be orientated in any direction, eliminating confusion during assembly.

Base Plates

Product Code: RIK-Q50-B-G12

Design Specifications

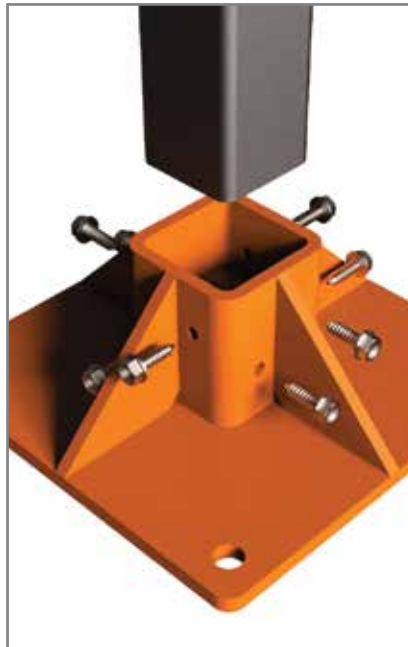
- Designed with lateral seismic loads in mind
- Accepts 50x50x3mm steel hollow section
- M12 Anchor holes optimally spaced to ensure maximum capacity
- Reinforced with gussets for increased seismic load capacity
- Fast and simple installation via self drilling screws (TK14-25)



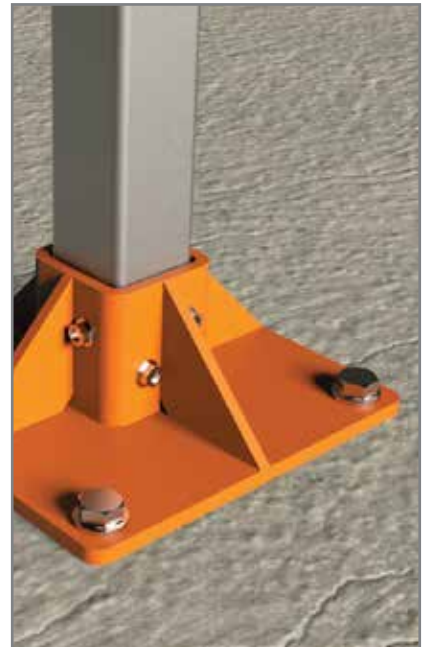
Features & Benefits



Accepts 50x50x3mm steel hollow section



Reinforced to withstand Seismic lateral loads



M12 anchors spaced optimally

Product Details

Anchor Capacity	M10 Anchors	M12 Anchors
Member Length (L)		
1m	3.29kn / 336kg	2.74kn / 280kg
2m	2.19kn / 224kg	1.37kn / 140kg

Dimensions (mm)				
A	B	C	D	E
200	70	8	68	6

Calculation is for ETA-C1 Power BT2
Anchors at max embedment:

M10 - 75mm Embedment
M12- 85mm Embedment

200mm Slab Thickness and 32MPa Concrete

Available in:

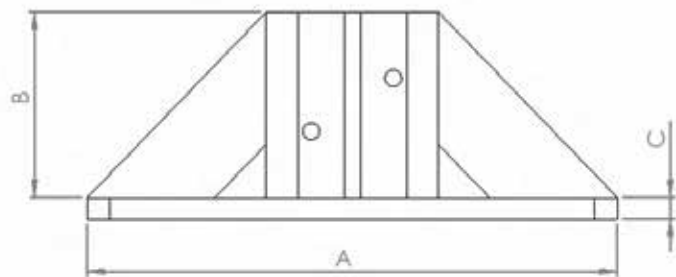
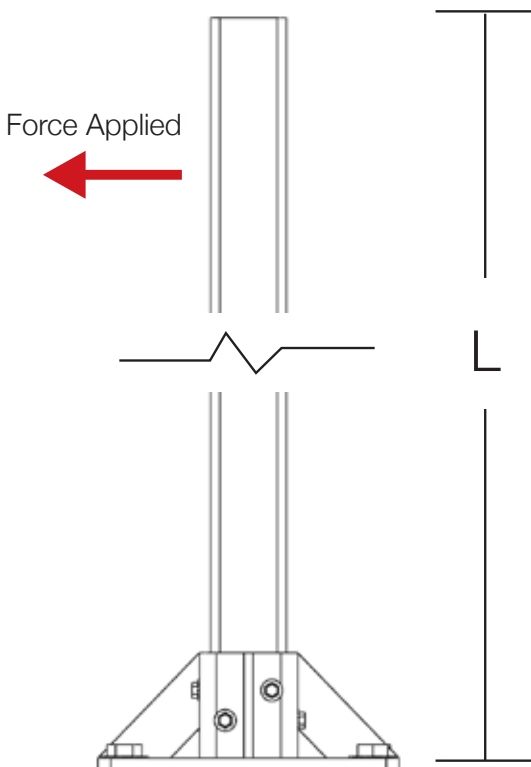
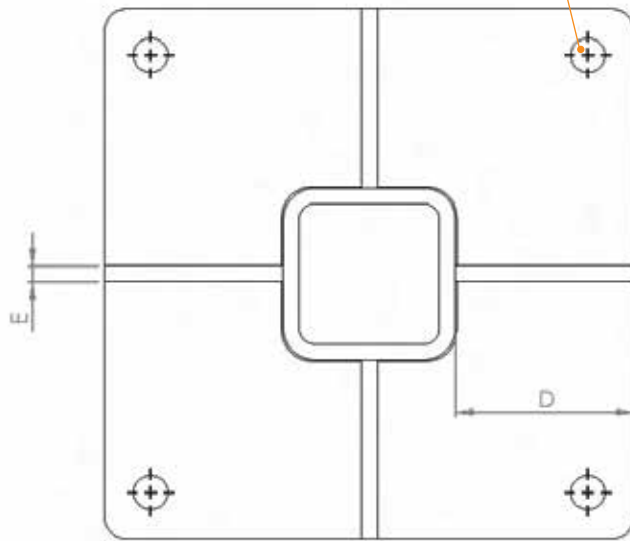


Powder Coat Colours



Hot Dip Gal

D13 to suit M12 Anchor

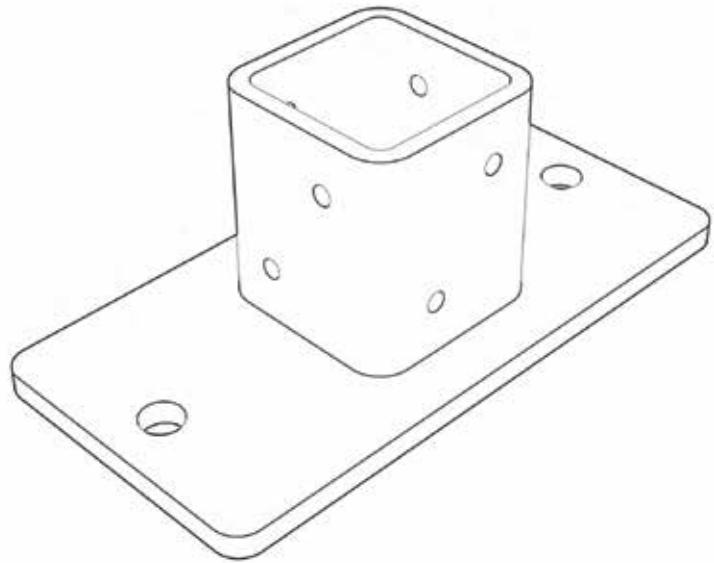


Base Plates

Product Code: RIK-Q50-B-W12

Design Specifications

- Small footprint baseplate designed to work in small spaces
- Accepts 50x50x3mm steel hollow section
- M12 Anchor holes optimally spaced to ensure maximum capacity
- Fast and simple installation via self drilling screws (TK14-25)



Features & Benefits



Accepts 50x50x3mm steel hollow section



Small Footprint

Product Details

Anchor Capacity	M12 Anchors
Member Length (L)	
1m	2.74kn / 280kg
2m	1.37kn / 140kg

Calculation is for ETA-C1 Power BT2 Anchors at max embedment:

M12- 85mm Embedment

200mm Slab Thickness and 32MPA Concrete

Dimensions (mm)					
A	B	C	D	E	F
200	70	8	100	65	68

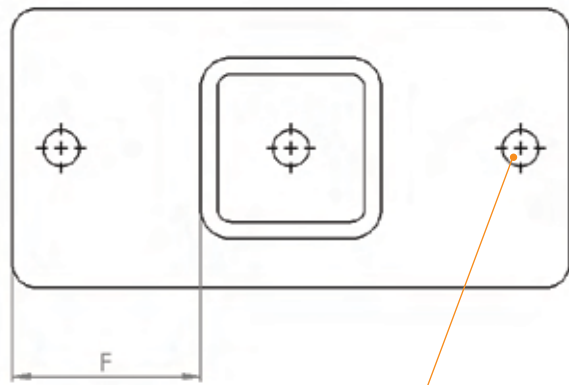
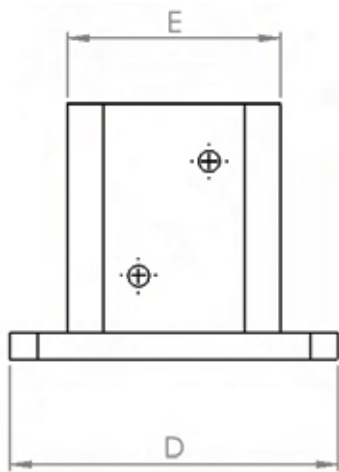
Available in:



Powder Coat Colours



Hot Dip Gal



D13 to suit M12 Anchor

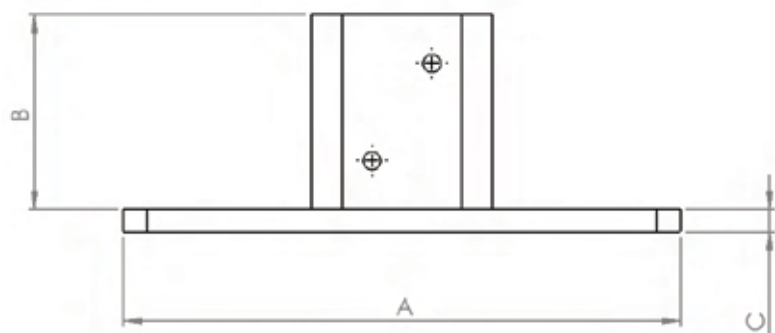
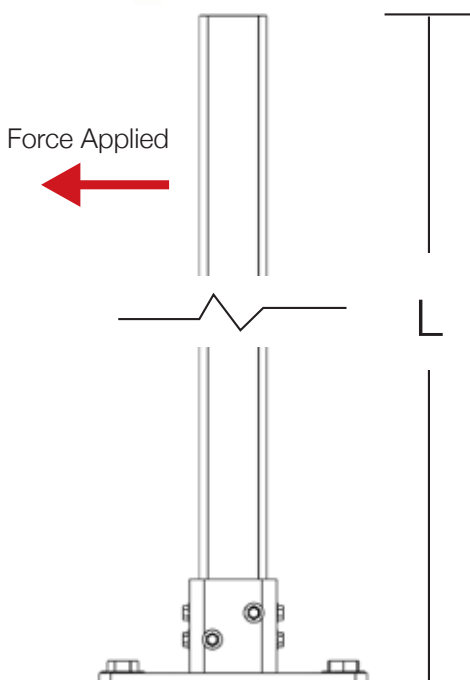
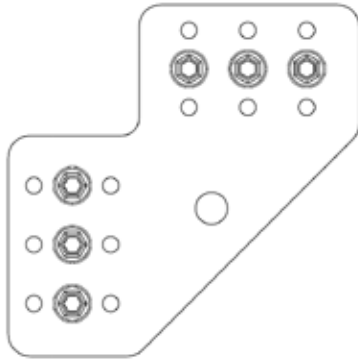




Plate Joiners Configuration

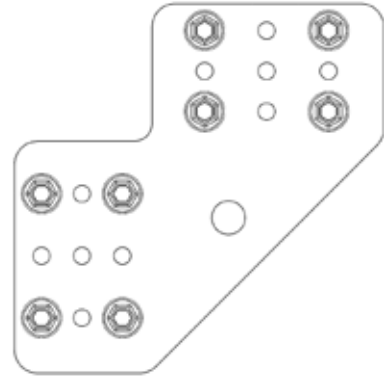
Product Code: RIK-Q50-J12

3 Screw Configuration



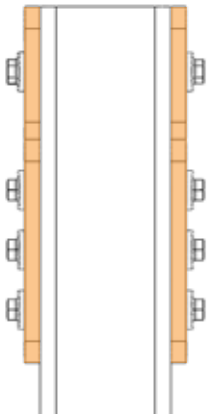
Product Code: RIK-Q50-J12

4 Screw Configuration



Product Code: RIK-Q50-J12 (double)

3 Screw Configuration



Depending on the configuration, the RIK-Q50 plates can adopt a variety of load ratings that can suit your needs.

Our base recommendation is 3 screws in line with each other. This will provide you with the minimum load ratings the system has been tested to.

- 3 Screw Configuration (Base Ratings)
- 4 Screw Configuration (Increase capacity by an additional 50%)
- Laminated (Double Sided) Configuration (Increase capacity by an additional 100%)

Load Rating

ULS Design Value	Fx (kN)	Fy (kN)	Fz (kN)
Single Sided	0.41	6.66	6.66
Double Sided	2.73	13.32	13.32
4 Screw Single Sided	0.41	9.43	9.43

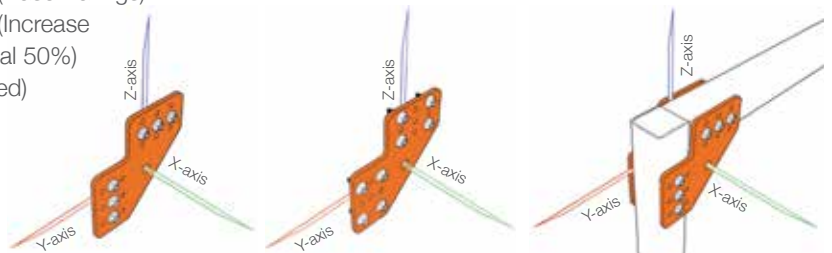


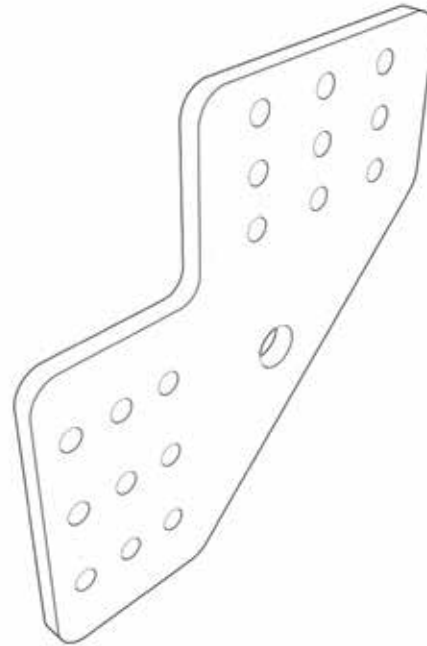
Plate Joiners

Product Code: RIK-Q50-J12

3 Screw Configuration

Design Specifications

- Seismic Plate designed to provide connections to 2 steel members
- Features M12 hardpoint for bracing or additional connections
- Multiple Tek Screw (TK14-25) screw holes to allow for multiple configurations
- Supplied with up to 9 Tek Screws (TK14-25)



Features & Benefits



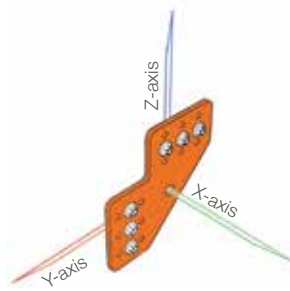
Uses common steel members



Quick and easy installation

Product Details

Load Rating			
	F _x (kN)	F _y (kN)	F _z (kN)
ULS Design Value	0.41	6.66	6.66



Available in:

- Powder Coat Colours
- Hot Dip Gal

Dimensions (mm)			
A	B	C	D
137	86	51	6

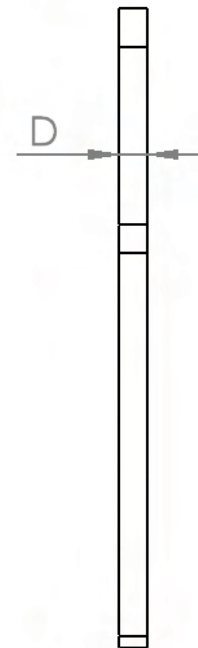
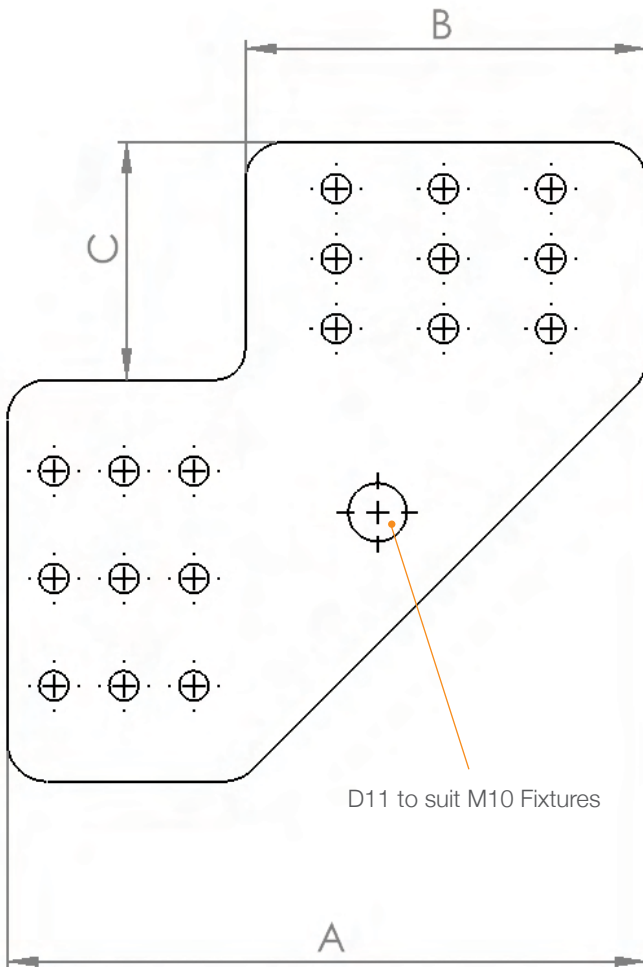


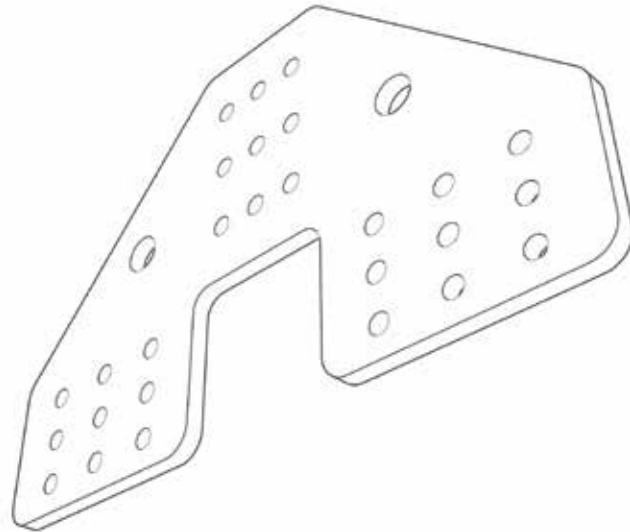
Plate Joiners

Product Code: RIK-Q50-J13

3 Screw Configuration

Design Specifications

- Seismic Plate designed to provide connections to 3 steel members
- Features M12 hardpoint for bracing or additional connections
- Multiple Tek Screw (TK14-25) screw holes to allow for multiple configurations
- Supplied with up to 12 Tek Screws (TK14-25)
- Open profile allows Steel tube to telescope through the plate



Features & Benefits



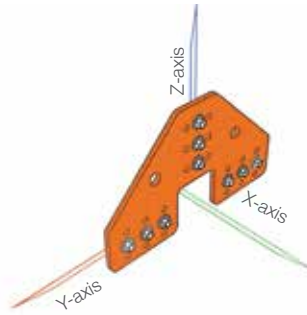
Uses common steel members



Quick and Easy Installation

Product Details

Load Rating			
	Fx (kN)	Fy (kN)	Fz (kN)
ULS Design Value	0.41	6.66	6.66



Available in:



Powder Coat Colours



Hot Dip Gal

Dimensions (mm)				
A	B	C	D	E
224	137	52	86	6

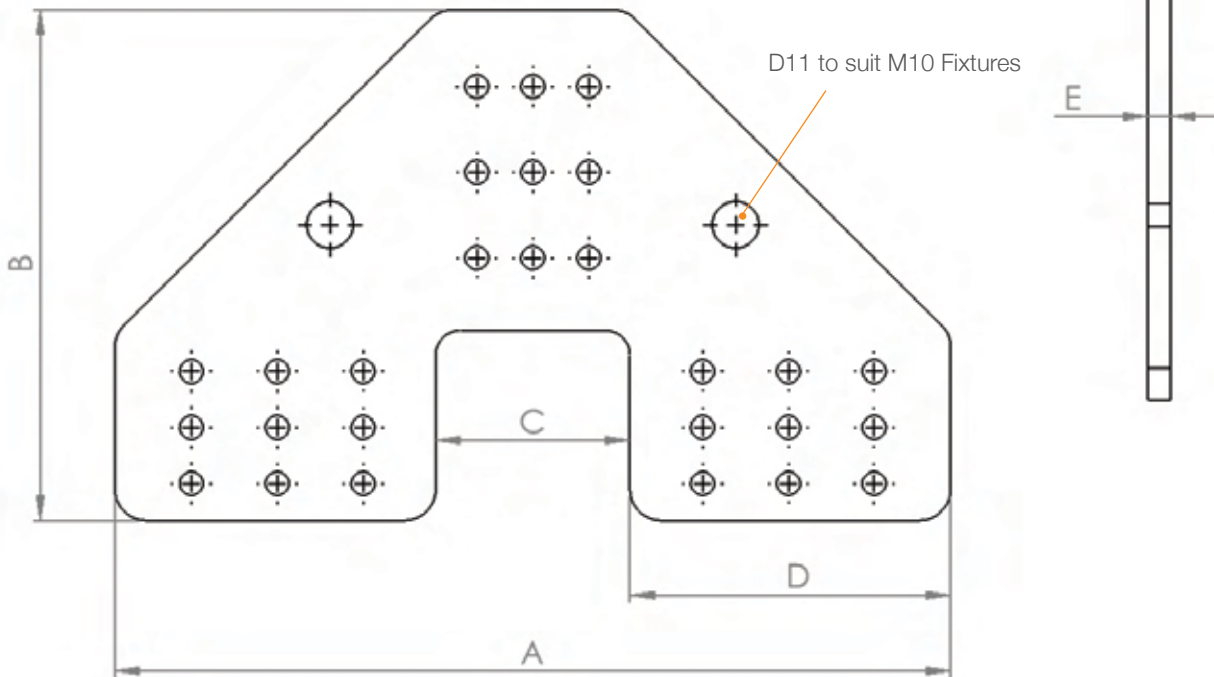


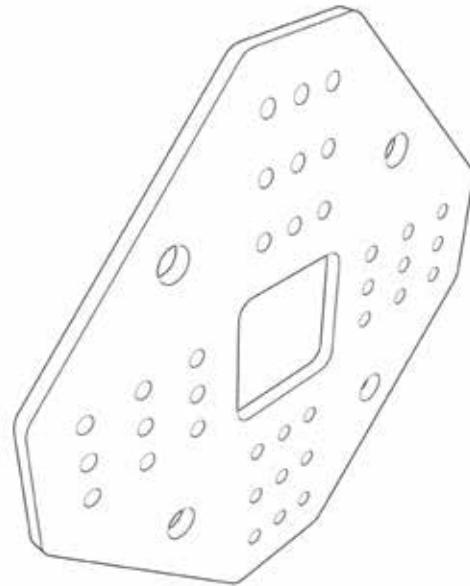
Plate Joiners

Product Code: RIK-Q50-J14

3 Screw Configuration

Design Specifications

- Seismic Plate designed to provide connections to 4 steel members
- Features M12 hardpoint for bracing or additional connections
- Multiple Tek Screw (TK14-25) screw holes to allow for multiple configurations
- Supplied with up to 20 Tek Screws (TK14-25)
- Open profile allows Steel tube to telescope through the plate



Features & Benefits



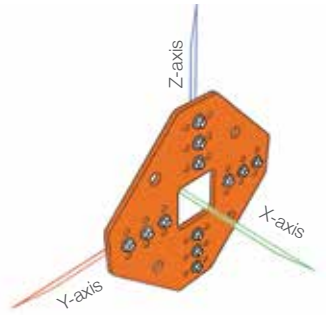
Uses common steel members



Quick and Easy Installation

Product Details

Load Rating			
	Fx (kN)	Fy (kN)	Fz (kN)
ULS Design Value	0.41	6.66	6.66



Available in:

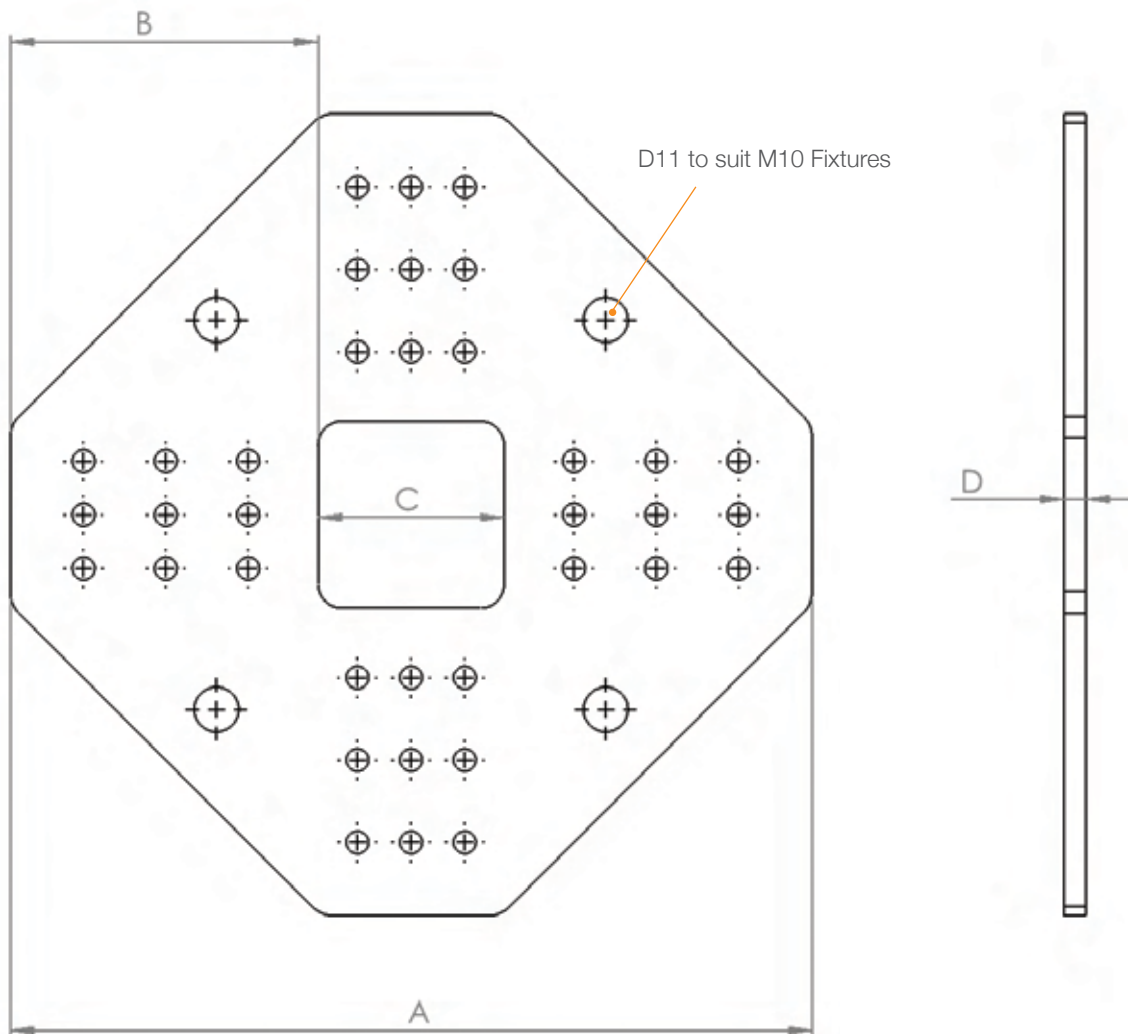


Powder Coat Colours



Hot Dip Gal

Dimensions (mm)			
A	B	C	D
224	86	52	6



System Accessories

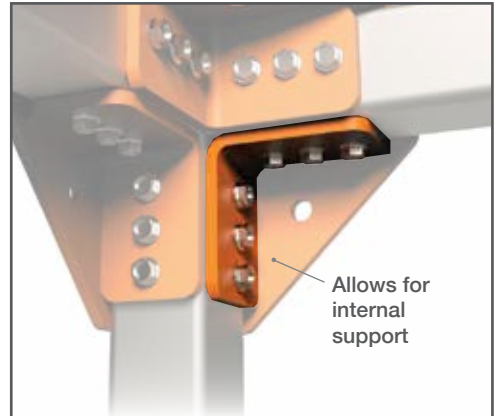
Brace connectors

Product Code: RIK-Q50-90

- 90 degree bracket to support steel members

Available in:

- Powder Coat Colours
- Hot Dip Gal



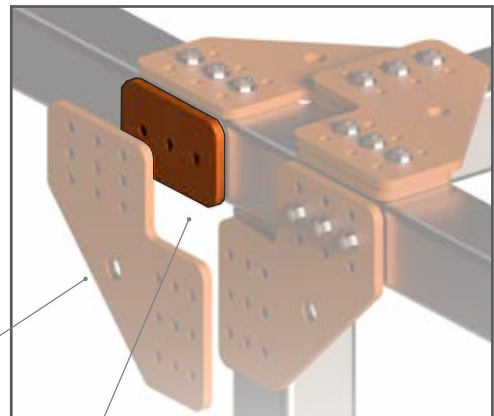
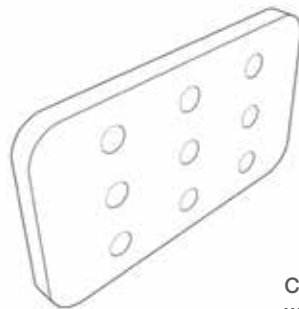
Allows for internal support

Product Code: RIK-Q50-SPC

- Allowing stacking of multiple RIK-Q50 Joiner plates

Available in:

- Powder Coat Colours
- Hot Dip Gal



Compatible with any RIK-Q joiner plates

Allows for plates to stack with one another to accommodate multiple junction connections

System Accessories

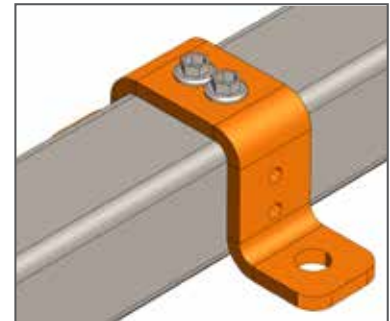
Mounting brackets

Product Code:
 RIK-Q50-M-S10 (M10 threaded rod)
 RIK-Q50-M-S12 (M12 threaded rod)

- Saddle Clip to allow for suspension of rod or services
- Available in M10 and M12 variants

Available in:

- Powder Coat Colours
- Hot Dip Gal

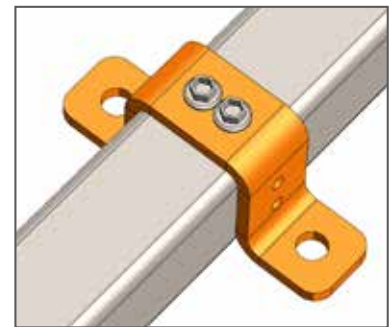
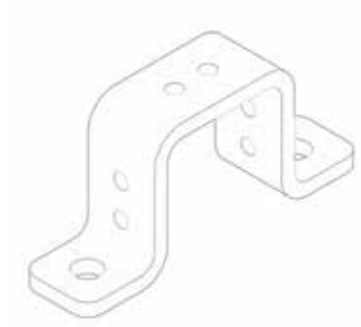


Product Code:
 RIK-Q50-M-D10 (M10 threaded rod)
 RIK-Q50-M-D12 (M12 threaded rod)

- Saddle Clip to allow for suspension of rod or services
- Available in M10 and M12 variants

Available in:

- Powder Coat Colours
- Hot Dip Gal

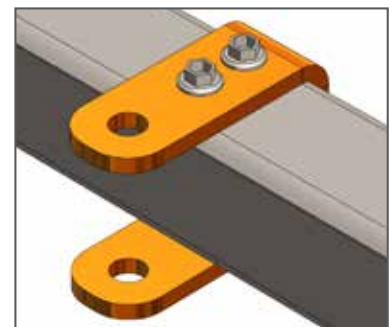


Product Code:
 RIK-Q50-M-C10 (M10 threaded rod)
 RIK-Q50-M-C12 (M12 threaded rod)

- Heavy Duty Saddle Clamp that allows for suspension of rod or services
- Available in M10 and M12 variants

Available in:

- Powder Coat Colours
- Hot Dip Gal

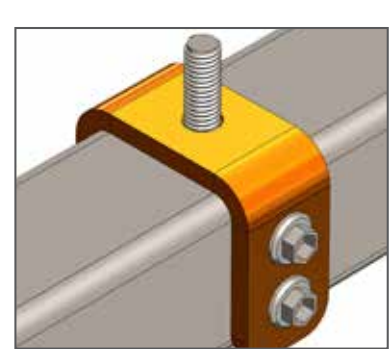
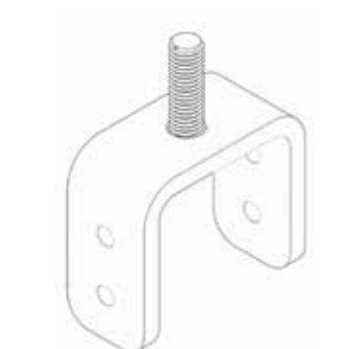


Product Code:
 RIK-Q50-M-10 (M10 Countersunk Bolt)
 RIK-Q50-M-12 (M12 Countersunk Bolt)

- Exposed thread to allow for fixture of services

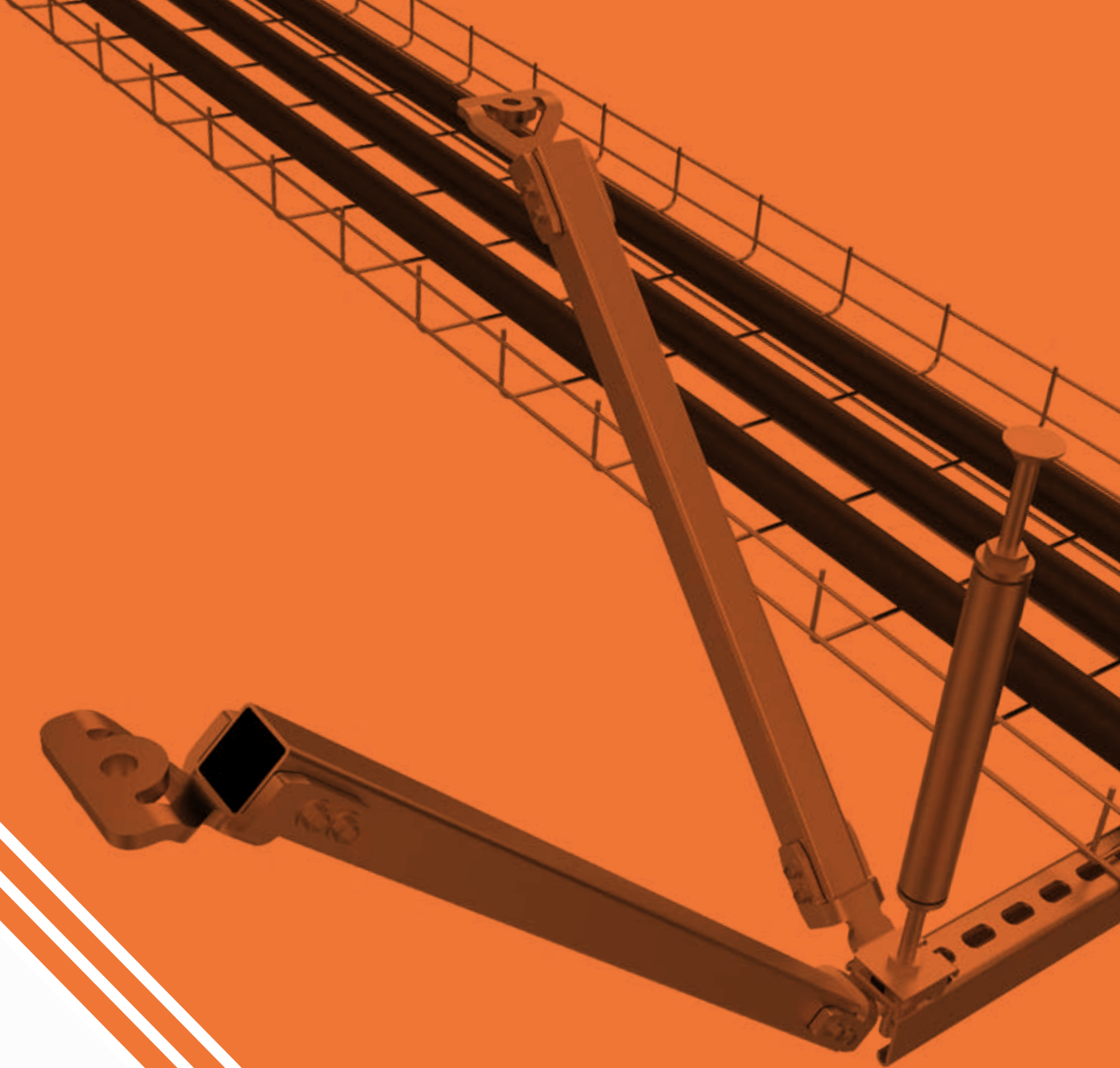
Available in:

- Powder Coat Colours
- Hot Dip Gal









RIKTA

SEISMIC SOLUTIONS

Discover **Rikta** for
your next project

Rikta Seismic Solutions
3 Corporate Avenue, Rowville,
Victoria, 3178, Australia

t: +61 3 9754 0333
f: +61 3 9754 6071
e: info@riktaseismic.com
w: www.riktaseismic.com