





# RIK-S Rigid Bracing

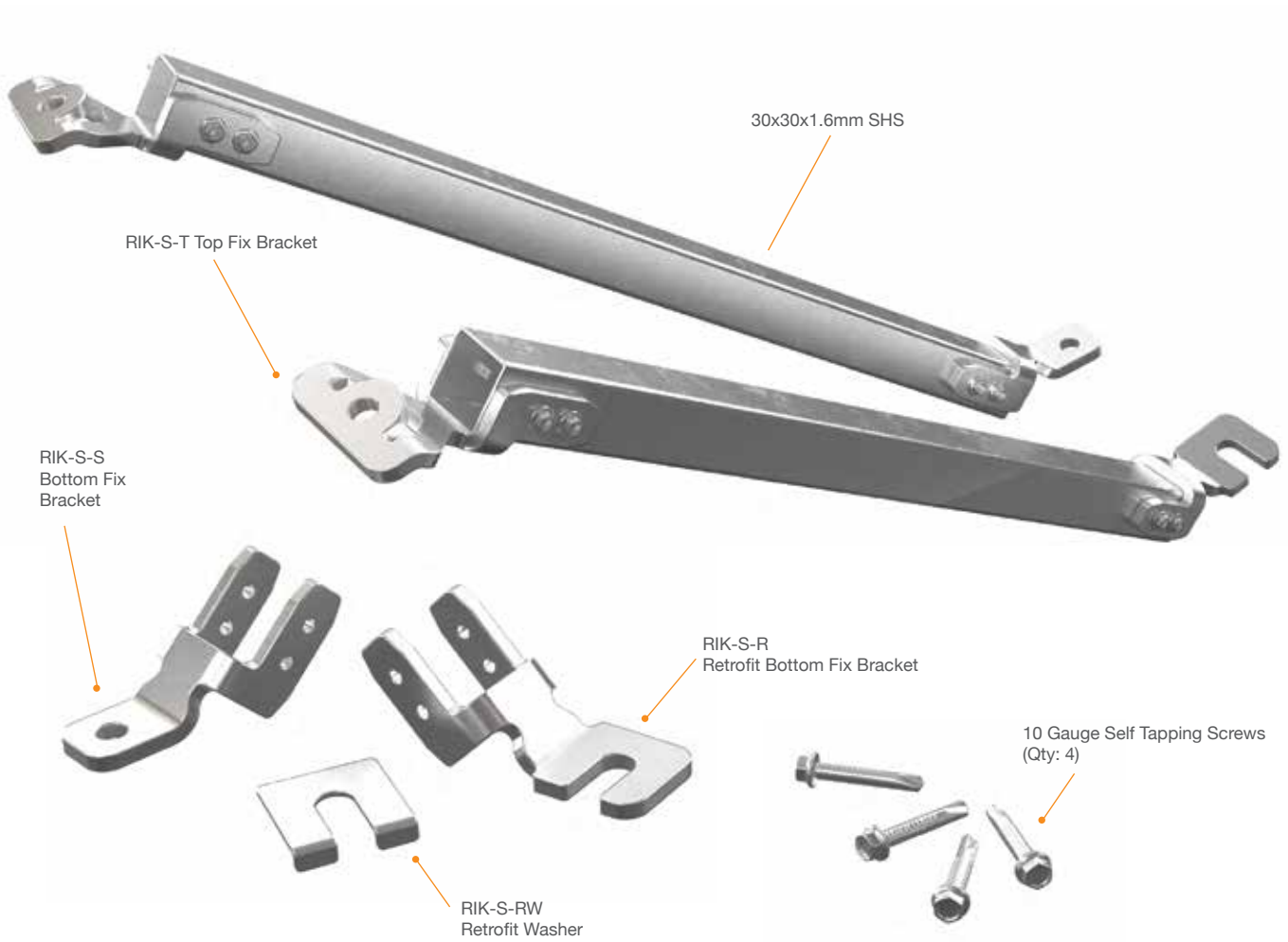
---

Developed specifically for use in seismic applications, the RIK-S Rigid Bracing offers the perfect joiners for rigid bracing of non-structural building components.

The RIK-S Rigid Bracing Range is the next evolution of seismic rigid bracing solutions. It utilises innovative features such as:

- Low-prying to reduce the need for larger anchors
- High load capacity
- Seismically tested to ULS Rating - AS/NZS1170.0
- Small profile utilises smaller steel members (30x30 SHS) to create a system with a small footprint
- Adjustable bracing angles allow for flexibility to avoid other services and hangers
- Quick installation that removes reliance on strut nuts or torque tools
- Easy visual inspection from self tapping screws which allow for positive fixtures between the bracket and steel member

## Key Features



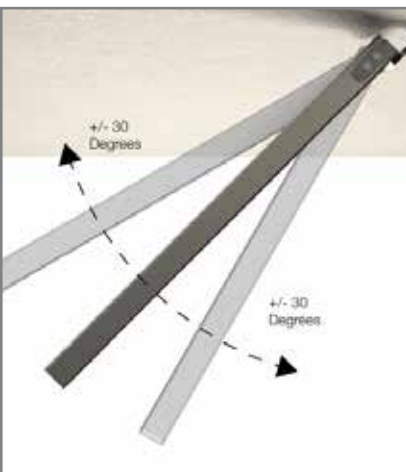
### Easy Visual Inspection

The brackets are supplied with high quality, self-tapping screws. These provide a positive fix between the bracket and steel member and allow for simple inspection to ensure correct, consistent installation.

### Low-Prying

Optimises the efficiency of the brace by applying the load through the centre of the anchor. This allows for smaller anchors to be used which in turn removes the need to drill large holes on site.

## Applications



### Adjustable

Using self drilling screws to quickly attach the RIK-S brackets to the hollow section means each brace can be adjusted prior to final positioning. Testing and relevant load ratings apply across the full range.

### Quick Installation

The use of self-tapping screws also eliminates the need for strut nuts and torque tools to be used. Ultimately, this leads to installations speeds much faster than traditional assemblies.

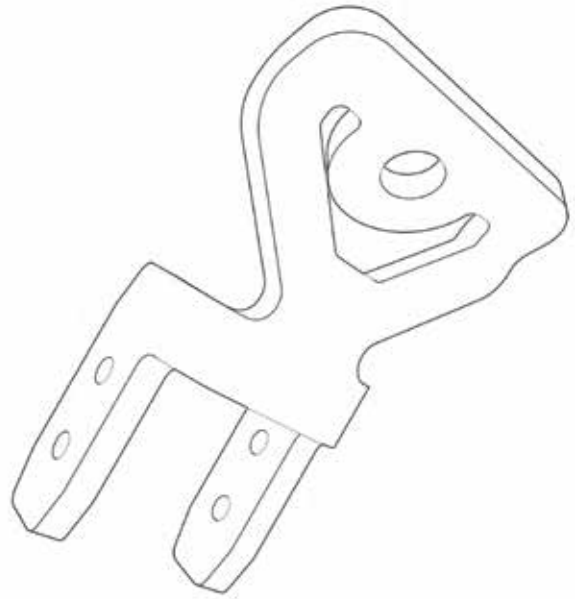
# Low-Pry Top Fixing Bracket

Product Code: RIK-S-T

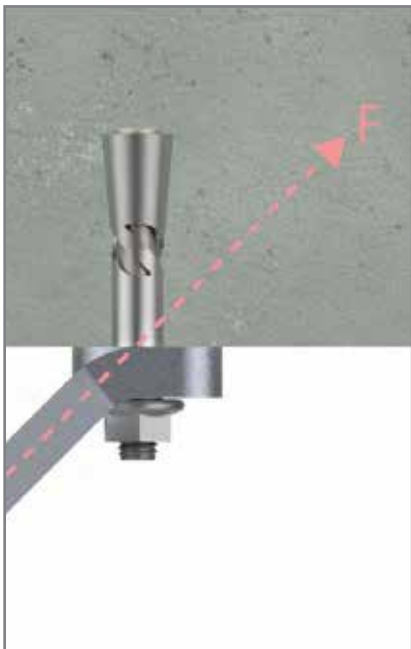
Designed for use in ceiling or top fixing environments

## Design Specifications

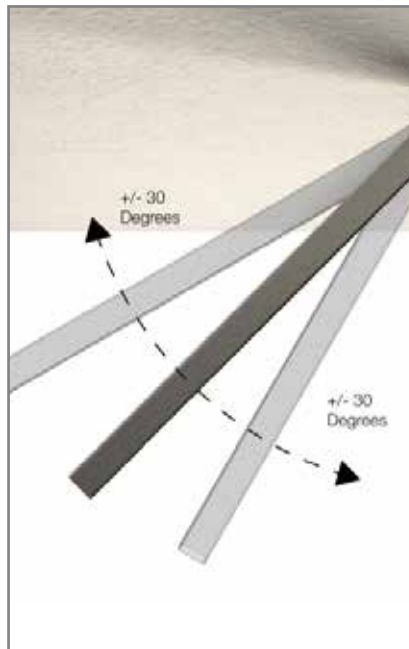
- Low-pry - The low-pry bracket applies the load to the centre of the anchor point, reducing the prying effect and meaning smaller anchors can be used
- Machined from a single piece of steel - Maximising strength
- Adjustable - To angles of 30 to 60 degrees
- Lightweight - Compact and small profile, utilising 30x30x1.6 SHS steel members



## Features & Benefits



Low Prying Factor



Adjustable



# RIK-S Rigid Bracing

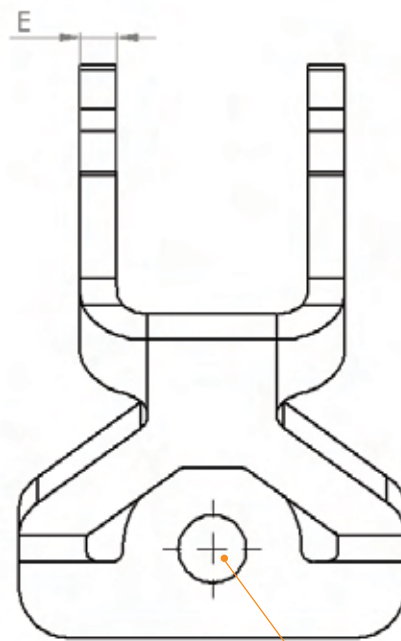
## Product Details

Bracket Rating	Kn	Kg
30 & 60 Degrees:	7.25kn	740kg
45 Degrees:	9.61kn	980kg
AS/NZS1170.0 Ultimate Limit State (ULS) Rating: Specifying Design engineer shall design and detail SHS member to satisfy the requirements of relevant standards		

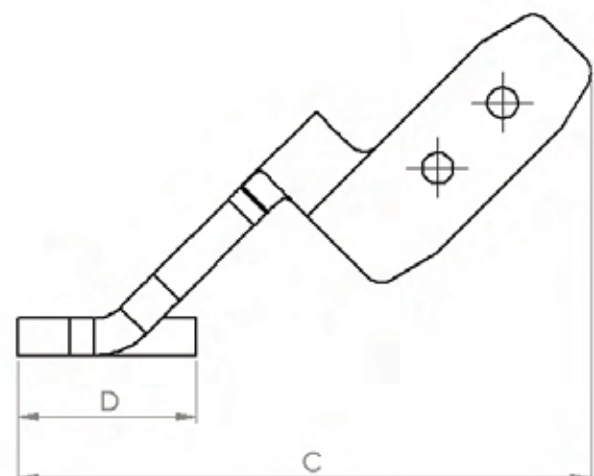
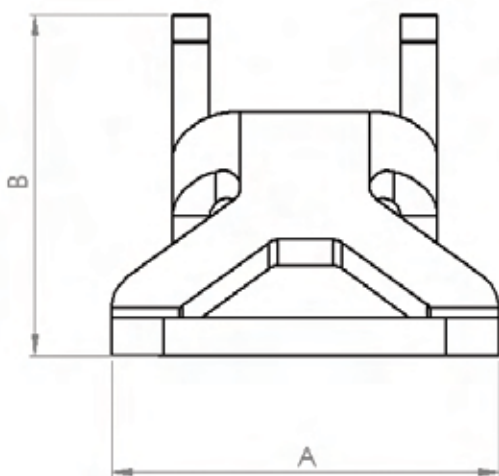
Dimensions (mm)				
A	B	C	D	E
63	56	94	29	6

### Available in:

- Powder Coat Colours
- Hot Dip Gal



D11 to suit M10 Anchor





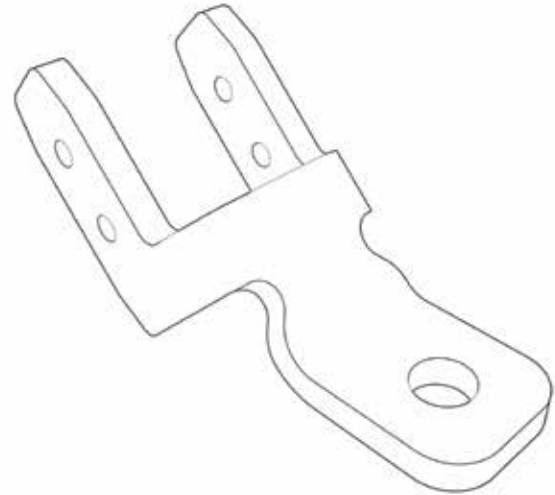
# Bottom-Fix Bracket

Product Code: RIK-S-S

Designed for use in push through applications.

### Design Specifications

- Machined from a single piece of steel - Maximising strength
- Adjustable - To angles of 30 to 60 degrees
- Lightweight - Compact and small profile, utilising 30x30x1.6 SHS steel members
- Stackable - Allows for a variety of configurations



### Features & Benefits



Standard Assembly



Quick and Easy Installation



# RIK-S Rigid Bracing

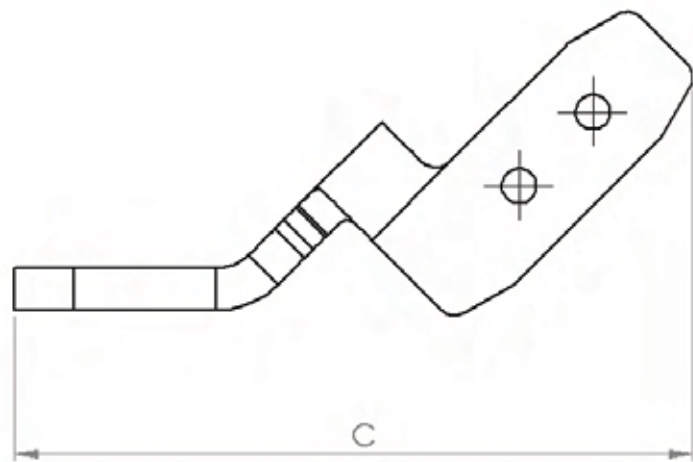
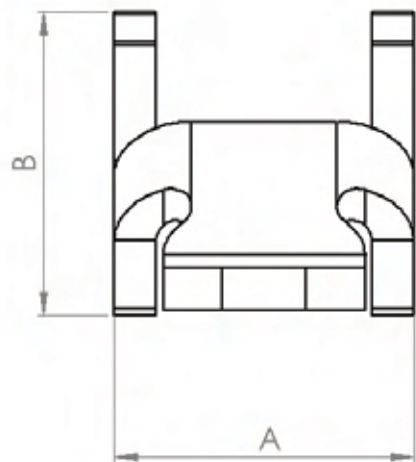
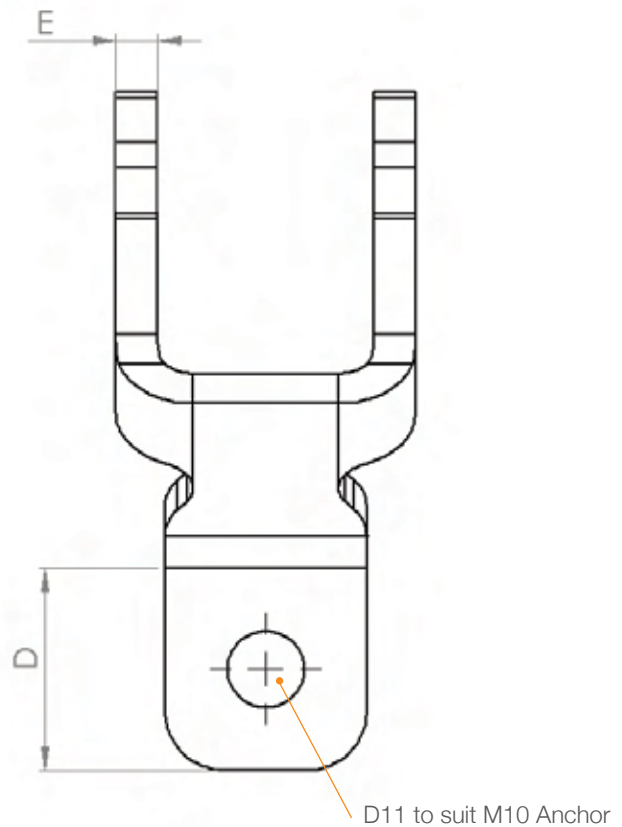
## Product Details

Bracket Rating	Kn	Kg
30 & 60 Degrees:	7.25kn	740kg
45 Degrees:	9.61kn	980kg
AS/NZS1170.0 Ultimate Limit State (ULS) Rating: Specifying Design engineer shall design and detail SHS member to satisfy the requirements of relevant standards		

Dimensions (mm)				
A	B	C	D	E
43	44	98	29	6

### Available in:

- Powder Coat Colours
- Hot Dip Gal





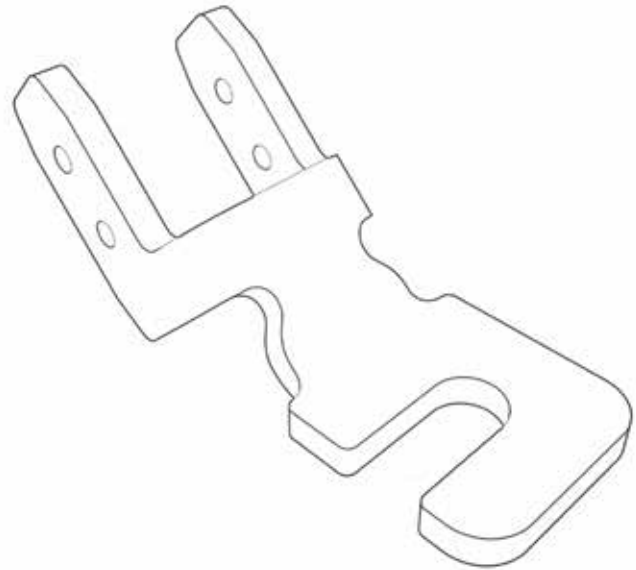
# Bottom-Fix Retrofit Bracket

Product Code: RIK-S-R

Designed for use in retrofit applications.

### Design Specifications

- Machined from a single piece of steel - Maximising strength
- Adjustable - To angles of 30 to 60 degrees
- Lightweight - Compact and small profile, utilising 30x30x1.6 SHS steel members
- Stackable - Allows for a variety of configurations



### Features & Benefits



Retrofit Assembly



Quick and Easy  
Installation



# RIK-S Rigid Bracing

## Product Details

Bracket Rating	Kn	Kg
30 & 60 Degrees:	6.27kn	640kg
45 Degrees:	8.92kn	910kg
AS/NZS1170.0 Ultimate Limit State (ULS) Rating: Specifying Design engineer shall design and detail SHS member to satisfy the requirements of relevant standards		

Available in:

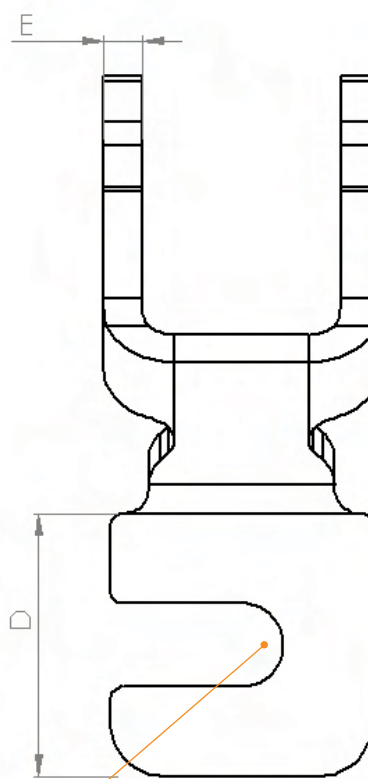
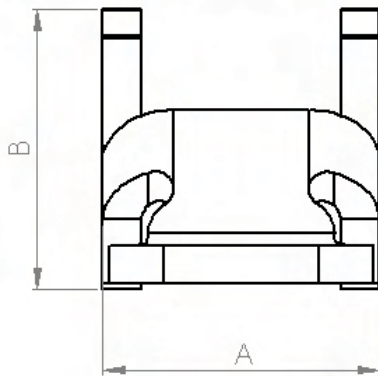


Powder Coat Colours



Hot Dip Gal

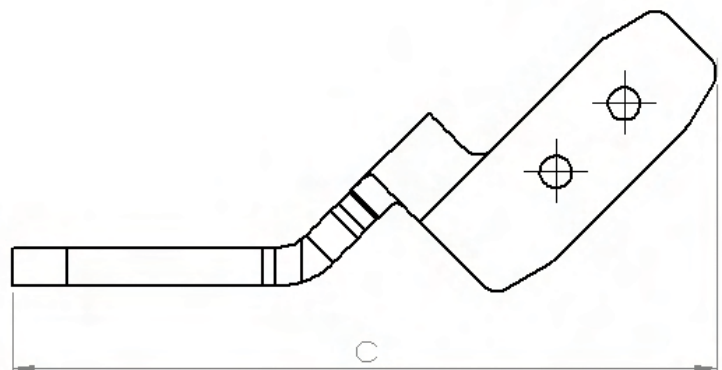
Dimensions (mm)				
A	B	C	D	E
43	44	110	41	6



D11 to suit M10 Anchor

**Accessories - Washer**

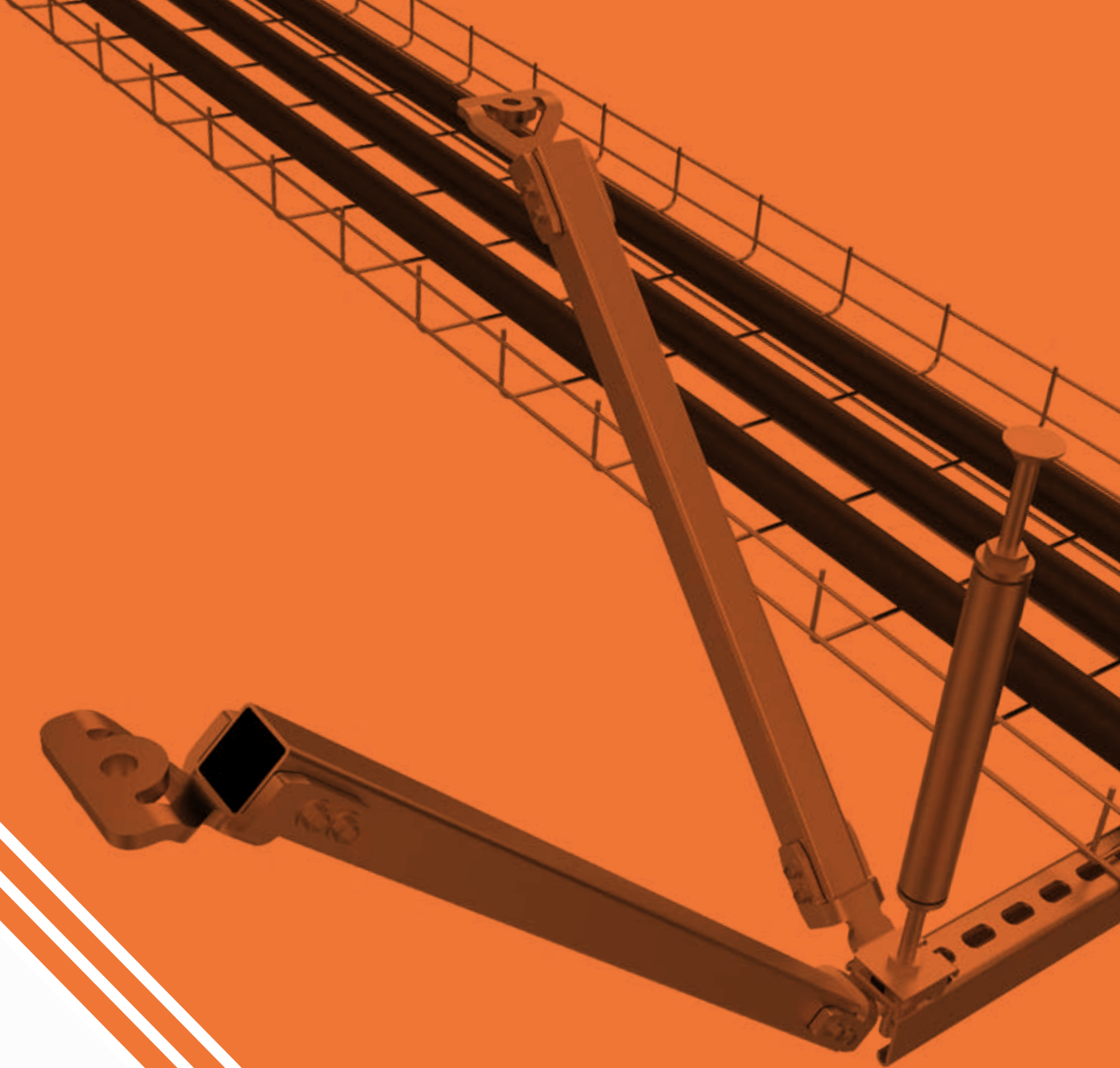
Dimensions (mm)				
A	B	C	D	E
43	41	13	2	8











# RIKTA

SEISMIC SOLUTIONS

Discover **Rikta** for  
your next project

Rikta Seismic Solutions  
3 Corporate Avenue, Rowville,  
Victoria, 3178, Australia

t: +61 3 9754 0333  
f: +61 3 9754 6071  
e: [info@riktaseismic.com](mailto:info@riktaseismic.com)  
w: [www.riktaseismic.com](http://www.riktaseismic.com)